

This is my family

wǒde míngzì _____
(My name)

New words:

我的	wǒde	my
学校	xuéxiào	school



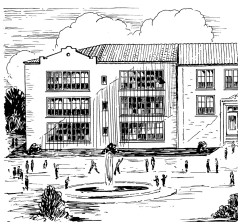
zhèshì wǒde jiā
这是我的家。



(This is my family.)



zhèshì wǒde xuéxiào
这是我的学校。



(This is my school.)

jiā
wǒde jiā
zhèshì wǒde jiā
(This is my family.)

The Pyramid sentence:

xuéxiào
wǒde xuéxiào
zhèshì wǒde xuéxiào
(This is my school.)

***Writing game:**

Leave your pen and paper on the table, go to other side of the classroom to find out the pinyin related to the numbers & come back to write down the pinyin underneath the numbers, and then translate it into English:

2 3 1

English meaning:

2 3 4

English meaning:

New words:

有	yǒu	have
没有	méiyǒu	don't have

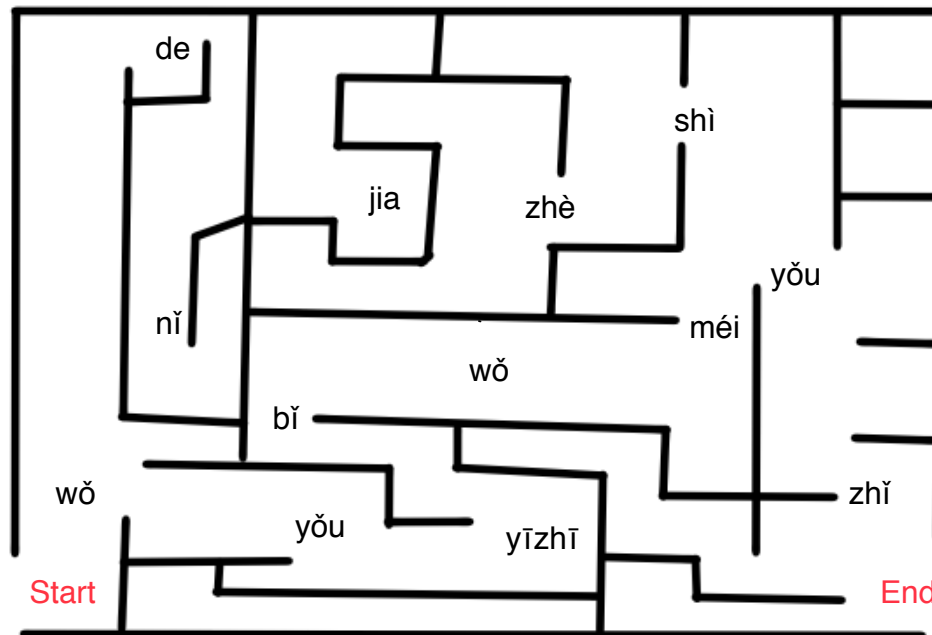
纸	zhǐ	paper
笔	bǐ	pen
一支笔	yīzhībǐ	a pen

bǐ
yīzhǐ bǐ
yǒu yīzhǐ bǐ
wǒ yǒu yīzhǐ bǐ
(I have a pen.)

The Pyramid sentence:

zhǐ
méiyǒu zhǐ
wǒ méiyǒu zhǐ
(I don't have paper.)

*A maze! Read the pinyin on your way finding the end. And write out the correct pinyin in the gaps underneath the maze. Then translate it into English.



Start

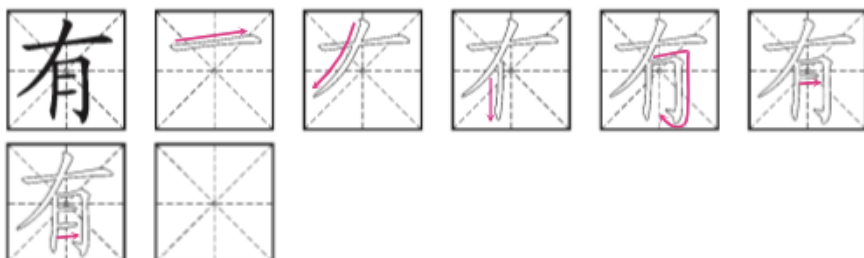
End

English meaning:

WRITING EXERCISE

Pinyin: yǒu

English meaning: have

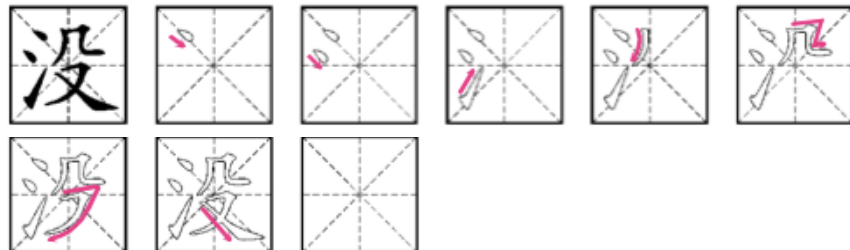


1 2 3 4
jiā zhèshì wǒde xuéxiào

WRITING EXERCISE

Pinyin: méi

English meaning: don't



Search words :

这	爸	爸	我	山
学	是	四	你	没
校	三	我	有	笔
森	口	纸	的	六
林	人	日	月	家

- 1.three 2.six 3.sun
- 4.moon 5.four 6.mountain
- 7.you 8.forest 9.population
- 10.school 11.pen
- 12. 3 people in my family
- 13. don't have paper
- 14.This is my family.